



Efectele
agriculturii
intensive



Eroziunea solului

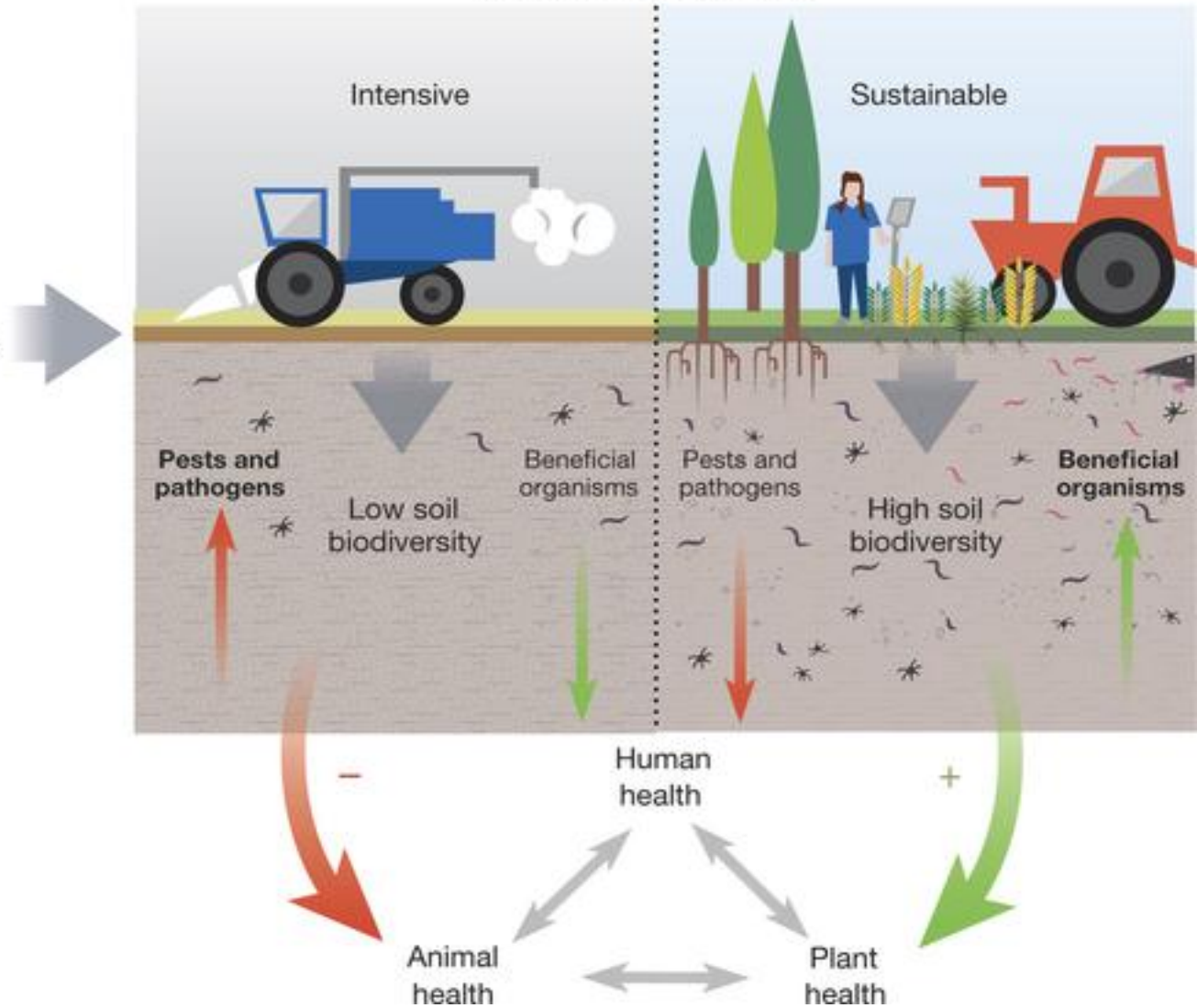


https://www.soil-net.com/legacy/schools/soil_erosion.htm

http://www.huffingtonpost.com/rosaly-byrd/deforestation-the-overlook_b_5594821.html

Land-use management

External drivers
Climate change,
nitrogen deposition,
invasive species,
and pollution



Pierderea biodiversității



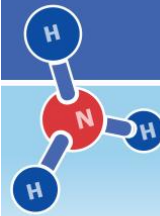
<http://tophdimgs.com/361071-green-field-of-crop.html>
<http://www.business-biodiversity.eu/en/food-standards>

Poluarea apei

- nutrienți,
- amoniu,
- nitrați,
- antibiotice,
- hormoni de creștere,
- metale grele, săruri



Agricultura intensivă: sursă de poluare cu nitrați



Activitățile agricole din statele UE au produs, în 2013, emisii de amoniac de 3,6 milioane de tone. Amoniacul este un gaz poluant și toxic, responsabil în parte pentru fenomenul de ploai acide și contaminarea solului și apelor cu nitrați și nitriți. Trei cincimi din cantitate provine de la deșeurile sectorului zootehnic, în timp ce restul rezultă din descompunerea resturilor vegetale.



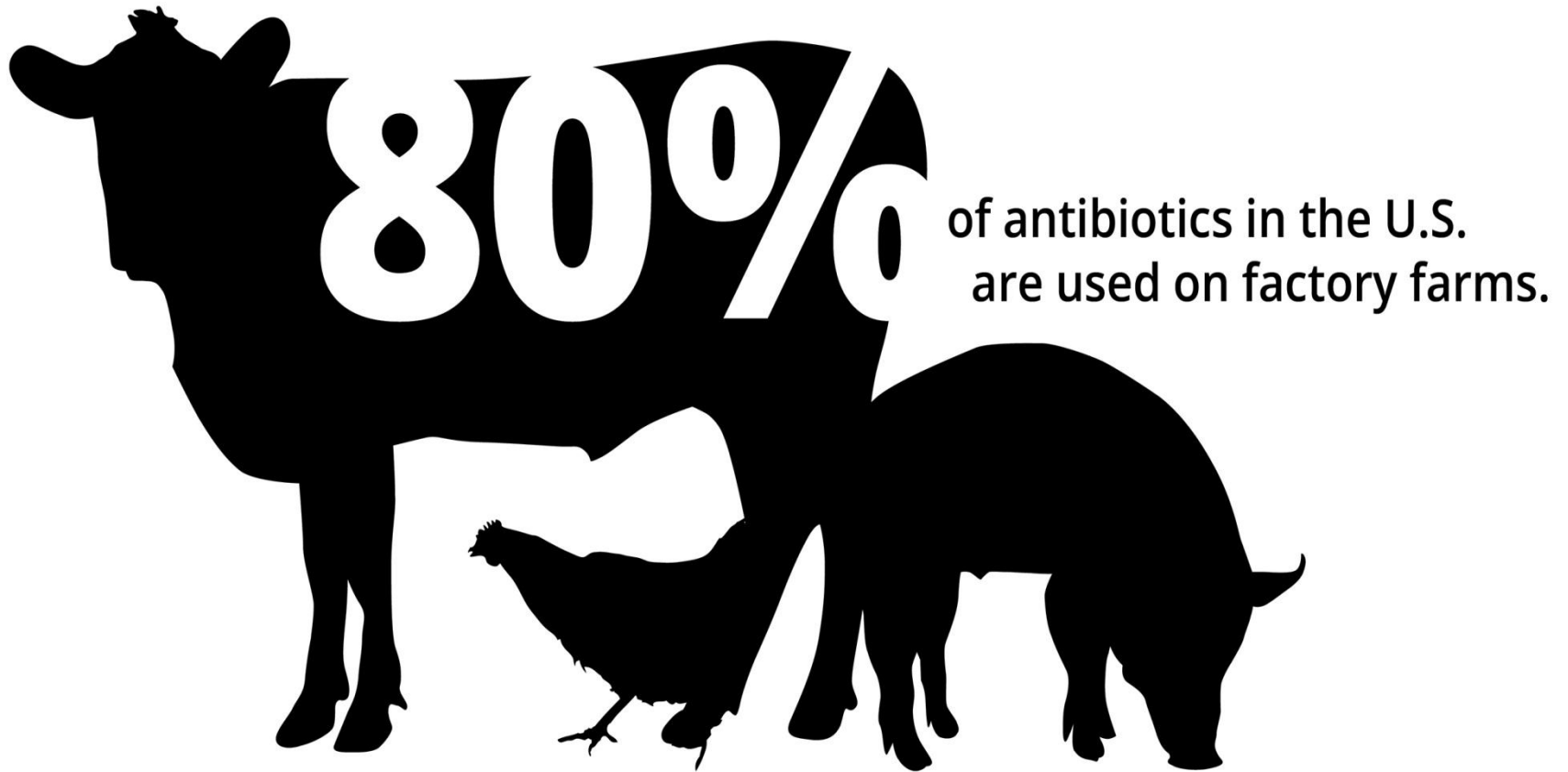
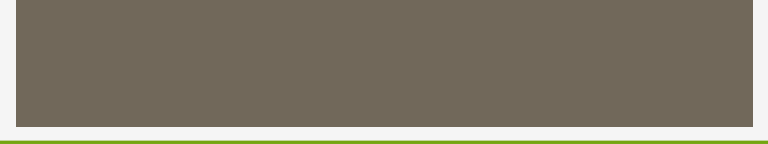
93,3%
din emisiile totale de amoniac din UE provin din activități agricole

Cota de emisii de amoniac, pe țări, din cantitatea totală a Uniunii Europene



SURSA: EUROSTAT

INFO adevărul financiar © : DANA DONCIU



Cod roșu de nitrați

Consumul de apă provenind din surse neverificate poate dăuna grav sănătății, în special la copii



Poluarea aerului

- sulfat de hidrogen,
- amoniu,
- endotoxine,
- dioxid de carbon,
- metan



<http://agriculture.auburn.edu>

<http://www.cnbc.com/2014/06/23/frankenstates-winning-the-agriculture-tech-war.html>



<http://www.cleanairegypt.org/air-pollution-and-aerosols-1/>

Sănătatea umană

HOW AGRICULTURAL EMISSIONS AFFECT OUR HEALTH

The agricultural sector is an important source of air pollution.
The EU must set strict limits on agricultural emissions in the National Emissions Ceilings Directive.

AGRICULTURAL EMISSIONS

Agriculture is the main source of ammonia (NH_3) and methane (CH_4) in the EU.



AIR QUALITY & HEALTH

Ammonia (NH_3) and methane (CH_4) are major contributors to Particulate Matter (PM) and ozone (O_3) - the most dangerous pollutants for human health.

PARTICULATE MATTER AND OZONE CAUSE

400,000+ premature deaths in the EU

€300bill-€900bill. in health-related costs every year in the EU



For more information on agricultural emissions, contact Faustine Defossez at faustine.defossez@eeb.org, or for air quality, contact Louise Duprez at louise.duprez@eeb.org

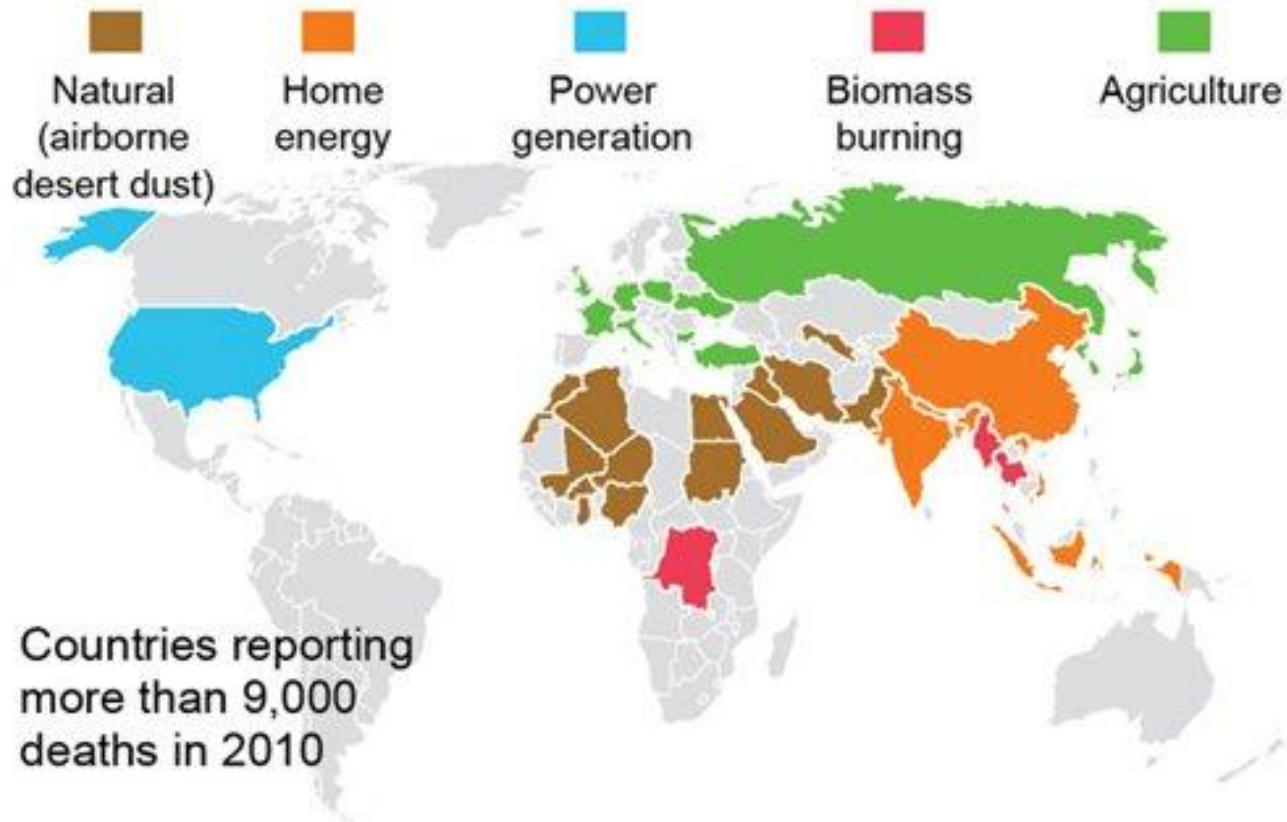
@Green_Europe #cleanair



<http://pollutionfreecities.blogspot.ro/2015/07/how-is-europe-dealing-with-air.html>

Top causes of lethal air pollution

The map shows the leading cause of death from air pollution in 36 countries, which kills 3.3 million people a year, in total.



SOURCE: Nature

AP

<https://www.chem.info/news/2015/09/study-air-pollution-kills-33-million-worldwide-may-double>